

⚠ When using with NAVY Batteries, the batteries will work properly when correctly connected. When using non-ePropulsion batteries, before starting the pod drive, users should configure the batteries via the Remote Control for the first time use, otherwise the batteries may not work properly.

⚠ Only use the same batteries (same model, same capacity, same age and same manufacturer) in series or in parallel configuration. Variations in the batteries will cause damage to them.

2.2 Checking the Propeller

The propeller is assembled on the pod. Before use, check the propeller and if necessary, e.g. the original propeller is broken, change a new propeller. Follow instructions in Figure 2-1 to assemble a propeller properly.

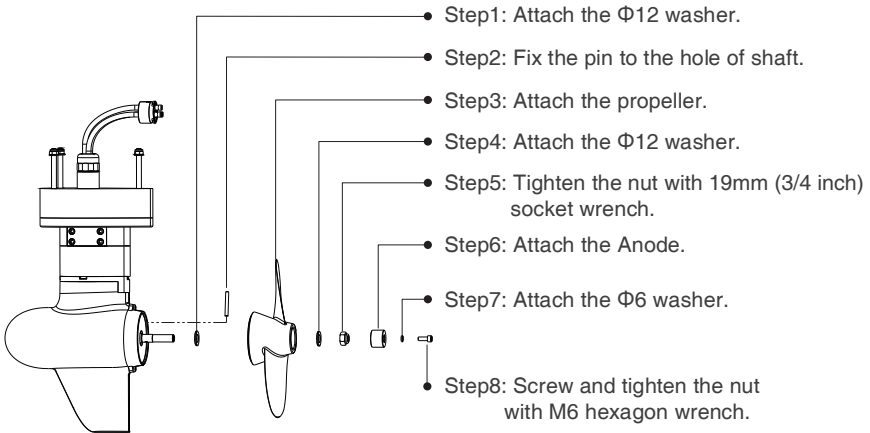


Figure 2-1